



# What kind of battery is used in energy storage station





## Overview

---

A battery energy storage system (BESS), battery storage power station, battery energy grid storage (BEGS) or battery grid storage is a type of technology that uses a group of in the grid to store . Battery storage is the fastest responding on , and it is used to stabilise those grids, as battery storage can transition fr.

Lithium-ion batteries stand out as the most prevalent choice for energy storage in modern applications, particularly in energy storage power stations.

Lithium-ion batteries stand out as the most prevalent choice for energy storage in modern applications, particularly in energy storage power stations.

Energy storage power stations utilize a variety of battery technologies to store and discharge electricity effectively. 1. Lithium-ion batteries, 2. Lead-acid batteries, 3. Flow batteries, 4. Sodium-sulfur batteries are among the primary types used. Lithium-ion batteries represent a significant.

A battery energy storage system (BESS), battery storage power station, battery energy grid storage (BEGS) or battery grid storage is a type of energy storage technology that uses a group of batteries in the grid to store electrical energy. Battery storage is the fastest responding dispatchable.

Battery chemistry plays a vital role in the safety of Battery Energy Storage Systems (BESS). While lithium-ion batteries offer high energy density and efficiency, they also pose fire risks due to thermal runaway. Alternative chemistries and advanced cooling solutions, such as immersion cooling, can.

You can find them in two main types: flooded lead - acid and valve - regulated lead - acid (VRLA). Flooded lead - acid batteries are the more traditional type. They've got an open design where the electrolyte is a liquid, and you need to check and top - up the water levels regularly. They're pretty.

Battery storage power stations store electrical energy in various types of batteries such as lithium-ion, lead-acid, and flow cell batteries. These facilities require efficient operation and management functions, including data collection capabilities, system control, and management capabilities.

Battery Energy Storage Systems (BESS) are devices that store energy in chemical form and release it when needed. These systems can smooth out fluctuations in



renewable energy generation, reduce dependency on the grid, and enhance energy security. BESS can be used in various scales, from small.



## What kind of battery is used in energy storage station

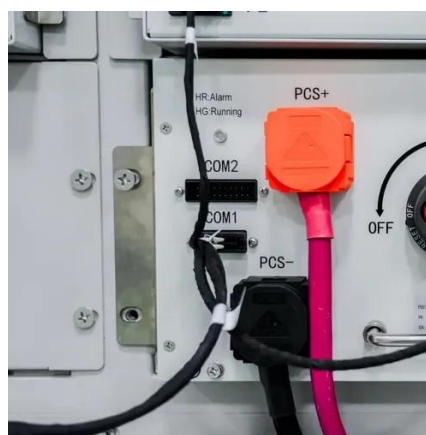


### [Batteries in Stationary Energy Storage Applications ...](#)

As of 2023, the UK had installed 4.7GW / 5.8GWh of battery energy storage systems,[1] with significant additional capacity in the ...

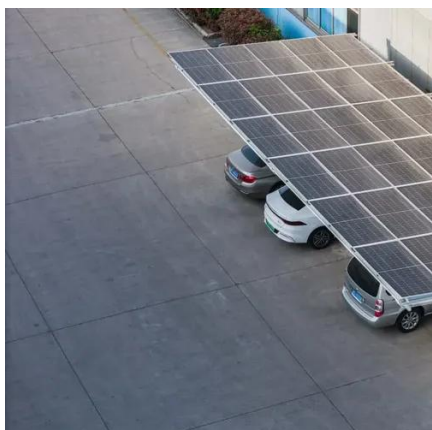
### [What batteries are there in energy storage power stations?](#)

Energy storage power stations utilize a variety of battery technologies to store and discharge electricity effectively. 1. Lithium-ion batteries, 2. Lead-acid batteries, 3. Flow ...



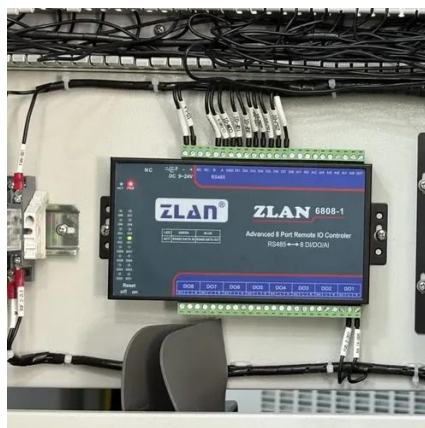
### **Battery Energy Storage Systems Explained: What They Are And ...**

Battery storage helps renewable energy like solar and wind by saving extra energy. This stored energy can be used when production is low. Companies like BSLBATT ...



???? ?? ?????? KIND

???? ?? ?????? KIND2012? 3? ?? ?????????? ?? ?? ???  
??? ??? ???. ?????? ?? ?????? ??, ?????? ?????? ??????. ?  
...



???? ?? ?????? KIND

???? ?? ?????? KIND??(?)?????????SH????SK?????????  
??\_ (???)  
??

### Batteries in Stationary Energy Storage Applications

As of 2023, the UK had installed 4.7GW / 5.8GWh of battery energy storage systems,[1] with significant additional capacity in the pipeline. Lithium-ion batteries are the ...



### **Energy Storage Systems: Batteries**

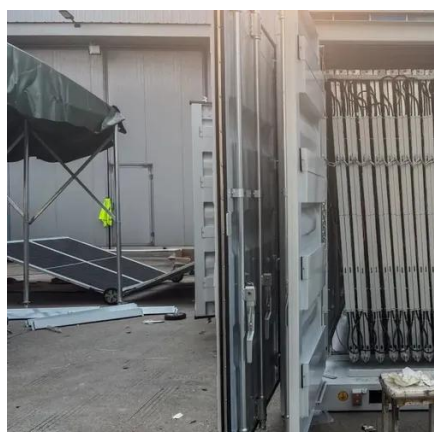
Batteries, as a form of energy storage, offer the ability to store electrical energy for later use, thereby balancing supply and demand, enhancing ...



### **Energy Storage Batteries**



Energy storage batteries (lithium iron phosphate batteries) are at the core of modern battery energy storage systems, enabling the ...



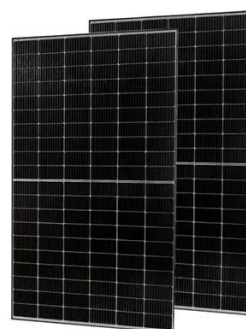
???? ?? ?????? KIND

???? ?? ?????? KIND? ??? ?????? ??? '???????' ?  
'???????' ??' ??? ?? ?? ??? ????? ??????. ?, ????? = ?????  
÷ ?? ...

### Battery energy storage system

OverviewConstructionSafetyOperating characteristicsMarket development and deployment

A battery energy storage system (BESS), battery storage power station, battery energy grid storage (BEGS) or battery grid storage is a type of energy storage technology that uses a group of batteries in the grid to store electrical energy. Battery storage is the fastest responding dispatchable source of power on electric grids, and it is used to stabilise those grids, as battery storage can transition fr...



???? ?? ?????? KIND

???? ?? ?????? KIND?? ??? ?????? ?? ??????. ?? ???  
SPAC??? ?? ??? ????? ? ?????? ??? ??????. ? ??? ?? ??  
...



### [Battery storage power station - a comprehensive](#)

...

Battery storage power stations store electrical energy in various types of batteries such as lithium-ion, lead-acid, and flow cell batteries. These ...

114KWh ESS



### [The Best Battery Types for Energy Storage: A Guide](#)

Lithium-ion batteries are the dominant choice for modern Battery Energy Storage Systems due to their high energy density, efficiency, and long cycle life. They are widely used ...



### [What types of batteries are commonly used in a Battery Storage ...](#)

As a supplier of Battery Storage System Stations, I've seen firsthand how important it is to choose the right batteries for these systems. In this blog, I'll walk you through ...



### [Types of Battery Energy Storage Systems \(BESS\) Explained](#)



Explore the main types of Battery Energy Storage Systems (BESS) including lithium-ion, lead-acid, flow, sodium-ion, and solid-state batteries, and learn how to choose the ...



???? ?? ?????? KIND

???? ?? ?????? KIND?? ????? ?????? ??? KRX-  
Papago??? ?????? ETF/ELW/ETN/???



### Battery energy storage system

A battery energy storage system (BESS), battery storage power station, battery energy grid storage (BEGS) or battery grid storage is a type of energy storage technology that uses a ...

???? ?? ?????? KIND

???? ?? ?????? KIND ????? ?? ?? (????, ???-????) ???  
?????. ?? ??? SPAC??? ?? ??? ????? ? ?????? ??? ...



???? ?? ?????? KIND



???? ?? ?????? KIND????????? ?? ?????? KIND



### The Best Battery Types for Energy Storage: A ...

Lithium-ion batteries are the dominant choice for modern Battery Energy Storage Systems due to their high energy density, ...



???? ?? ?????? KIND

???? ?? ?????? KIND????? ??? ??? ????? ??????????  
????????? ????? ???



### Battery Energy Storage Systems Explained: What ...

Battery storage helps renewable energy like solar and wind by saving extra energy. This stored energy can be used when production is ...



???? ?? ?????? KIND (1)

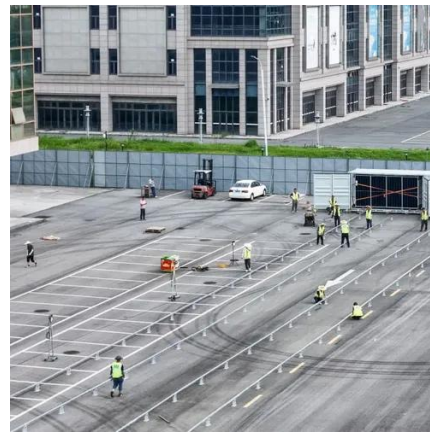


???? ?? ?????? KIND?????? (?? NXT ???? ?? ?? ????  
?? KR.. 12-29 08:10 ?????? (?? NXT ???? ?? ?? ????  
?? KR.. 12-29 08:06 ...



**???? ?? ?????? KIND**

???? ?? ?????? KIND?? ??? 2012? 5??? ?????? (???)  
?? ??????. ? ??? ?? ?? ?? ??, ??? ?????? ??? ? ?????. ???  
...





## Contact Us

---

For catalog requests, pricing, or partnerships, please visit:

<https://www.asimer.es>

Phone: +34 910 56 87 42

Email: [info@asimer.es](mailto:info@asimer.es)

Scan the QR code to access our WhatsApp.

