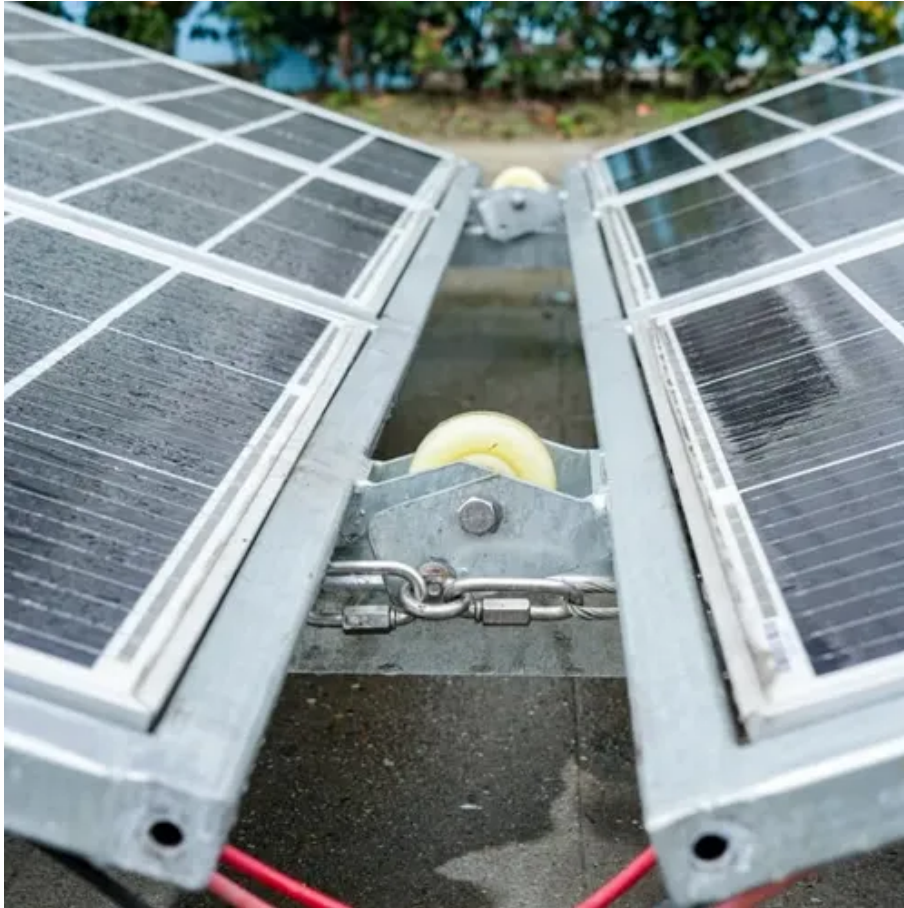




What to do if the current of the communication high-voltage battery cabinet is too large





Overview

Reinstall the service plug and ensure that it is fully engaged, closed, and latched down or fully twisted into place. Check that all connections to the HV battery are secure. Look for loose connections, damage, or corrosion. Replace or correct as necessary.

Reinstall the service plug and ensure that it is fully engaged, closed, and latched down or fully twisted into place. Check that all connections to the HV battery are secure. Look for loose connections, damage, or corrosion. Replace or correct as necessary.

This manual contains important instructions that should be followed during installation and maintenance of the UPS and batteries. Read all instructions before operating the equipment and save this manual for future reference. Ce manuel comporte des instructions importantes que vous êtes invité à.

The first step of the troubleshooting process should be to follow the steps in this chapter for common battery issues. If you experience problems with VictronConnect, first consult the VictronConnect manual, especially the troubleshooting chapter. Should all this fail to resolve the issue, scan.

Proper setup and maintenance of a telecom battery bank ensure reliable energy storage and delivery. When batteries operate efficiently, they support uninterrupted communication services, even during power outages. Neglecting maintenance or improper configuration can reduce performance, shorten.

One of the most common problems in a battery cabinet is overheating. Batteries generate heat during charging and discharging, and if this heat isn't managed properly, it can lead to reduced battery life and even safety hazards. Symptoms: You might notice that the cabinet feels unusually hot to the.

The HBMS100 battery box collects the voltage and temperature of the single cell from battery module and is processed by the high-performance embedded microprocessor. The whole system adopts modular design with compact structure and high reliability. The HBCU100 master control box collects all the.

After installing a CARDONE replacement high-voltage (HV) battery, the vehicle is



still displaying warning indicators, Diagnostic Trouble Codes (DTCs), or other related symptoms. Replacing the original HV battery may not solve the root cause of the vehicle's symptoms alone. Follow these guidelines. What is a high voltage battery?

The High Voltage system associated with a group of cells strung together in series and/or parallel. The electrical design of the battery pack is associated with fundamental electrical elements.

What should I do if my battery is in range?

If they are all in range, then follow one of the following procedures. Also consider that once there has been a cell under voltage alarm, the cell voltage of all cells needs to be increased to 3.2V before the battery clears the under voltage alarm.

What happens if the battery voltage is less than 10V?

If the battery has a voltage of less than 10V (20V) or if one of the battery cells has a cell voltage below 2.5V, the battery will have permanent damage. This will invalidate the warranty. The lower the battery or cell voltage is, the more damage to the battery will be.

What if a cell voltage is below the allowed to discharge setting?

If a cell has a cell voltage below the "Allowed to Discharge" setting in the battery the BMS will turn the load off. The "Allowed to Discharge" level can be set between 2.6V and 2.8V. The default is 2.8V. Check the cell voltages of all the batteries that are connected to the BMS using the VictronConnect app.



What to do if the current of the communication high-voltage battery



[ESTEL Telecom Battery Bank Setup and Maintenance Guide](#)

Learn how to set up and maintain a telecom battery bank for reliable power, extended battery life, and uninterrupted telecom operations during outages.

[SmartGen HBMS100 Energy storage Battery cabinet](#)

The HBMU100 battery box and HBCU100 master control box communicate with each other via CANBUS. The HBMS100 battery box collects the voltage and temperature of the single cell ...



[Understanding the Lithium-Ion Battery Charging Cabinet: ...](#)

Unlike lead-acid, lithium-ion does not use float charging or trickle charging. Once the charge voltage threshold is reached and the current drops to 3-5% of the battery's rated ...

[ESTEL Telecom Battery Bank Setup and ...](#)

Learn how to set up and maintain a telecom battery bank for reliable power, extended battery life, and uninterrupted telecom ...



High-voltage direct current

HVDC lines are commonly used for long-distance power transmission, since they require fewer conductors and incur less power loss than equivalent ...



High Voltage System

Current flow in and out of a battery pack is a key parameter in any battery management system, hence the need for a current sensor. EV current ...



[Eaton 93PM Integrated Battery Cabinet-Large and Large ...](#)

This manual contains important instructions that should be followed during installation and maintenance of the UPS and batteries. Read all instructions before operating the equipment ...



High-voltage direct current



HVDC lines are commonly used for long-distance power transmission, since they require fewer conductors and incur less power loss than equivalent AC lines. HVDC also allows power ...



[How ESTEL Ensures Proper Voltage for Communication Cabinets](#)

Proper voltage regulation is crucial for uninterrupted communication services, preventing costly downtime and equipment damage. ESTEL's advanced power distribution ...

6. Troubleshooting & support

Is there an indication the battery has been charged with a too-high voltage? Check the maximum battery voltage and the high voltage alarms in the battery monitor.



[Understanding the Lithium-Ion Battery Charging ...](#)

Unlike lead-acid, lithium-ion does not use float charging or trickle charging. Once the charge voltage threshold is reached and the ...



High Voltage System



Current flow in and out of a battery pack is a key parameter in any battery management system, hence the need for a current sensor. EV current sensors are basic components. They perform ...

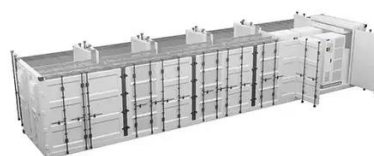


[How to troubleshoot problems in a battery cabinet?](#)

Hey there! As a supplier of Battery Cabinets, I've seen my fair share of issues when it comes to these crucial pieces of equipment. In this blog, I'll walk you through some common problems ...

[How ESTEL Ensures Proper Voltage for ...](#)

Proper voltage regulation is crucial for uninterrupted communication services, preventing costly downtime and equipment ...



[Troubleshooting a High-Voltage Battery Installation](#)

As equipped, check for water intrusion near the vehicle's rear hatch which can cause shorts in the HV battery, battery cooling system, or auxiliary battery. Repair or correct as necessary.

[SmartGen HBMS100 Energy storage Battery cabinet](#)



The HBMU100 battery box and HBCU100 master control box communicate with each other via CANBUS. The HBMS100 battery box collects the ...





Contact Us

For catalog requests, pricing, or partnerships, please visit:

<https://www.asimer.es>

Phone: +34 910 56 87 42

Email: info@asimer.es

Scan the QR code to access our WhatsApp.

